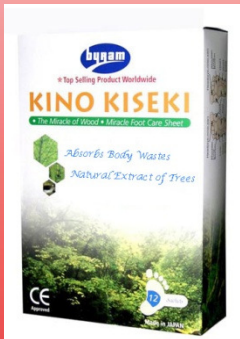


BYRAM
P.R.O.D.U.C.T.S



BYRAM HOLDINGS PTE LTD

Lifestyle

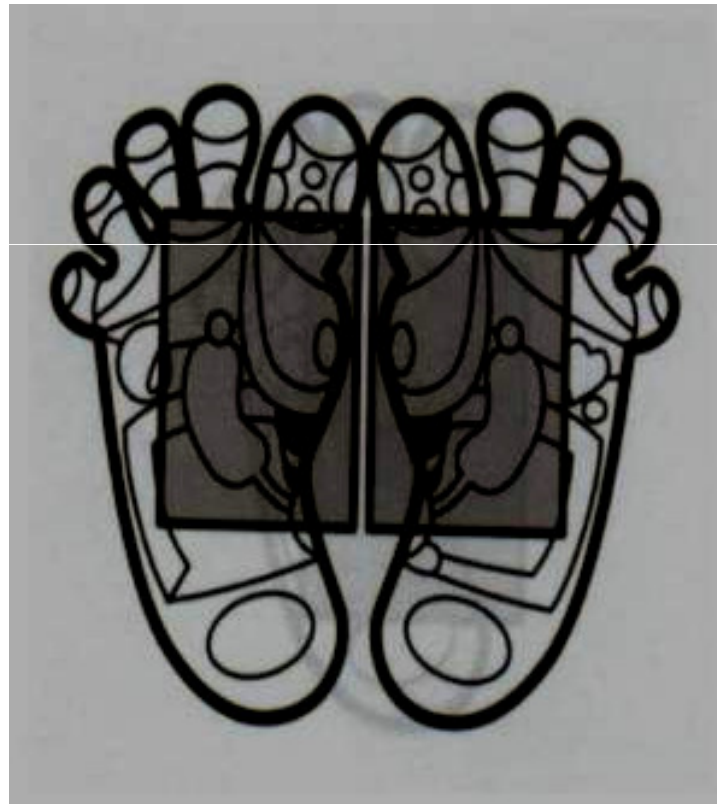


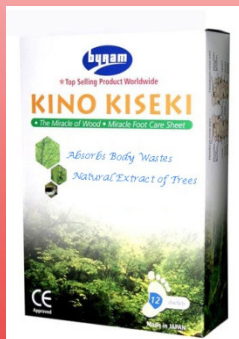
www.byramgroup.com

The Healthier You Are, The Happier You Are



KINO KISEKI (MIRACLE FOOT CARE SHEET)





KINO KISEKI THE MIRACLE OF WOOD TREASURE

100% Natural Extract of Tree
No Chemicals ! No Pills or Capsules ! No Side effects !

NATURE'S MOST POWERFUL NATURAL ENERGY

It was found in nature that forest trees have its own natural abilities to absorb energy from the Sun and its environment and they are able to grow and survive for thousands of years.

The mysterious power and energy from tree have attracted many Japanese Researchers. After 30 years of research and development, they have successfully extracted the natural wood vinegar from trees for human use. It has profound effects when it is used on human for health care.

Kino Kiseki..... Major Breakthrough for the 21st Century for Mankind

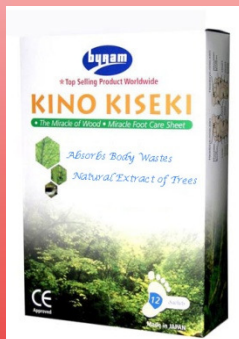
EXTRACTS TOXINS FROM BODY NATURAL WAY

Since the dawn of civilization, mankind has used the extracts of herbs to apply to cure many ailments. **Kino Kiseki** is a combination of natural resource extract and processed wood vinegar that are made into sachets using latest technology. The sole of the foot reflects the body's internal organs. **Kino Kiseki** activates more than 60 acupuncture points on the sole of the foot and absorbs the toxins from the entire body.

The Healthier You Are, The Happier You Are



Before going to bed, stick a sheet of **Kino Kiseki** on the soles of the both feet and you will discover the mysteries of this natural sheet, the following day. The colour of the sachet will change to dark grayish or brownish. It will contain a lot of unpleasant fluid and emit an odour. This shown that the toxins of the body is extracted out and the unwanted and unhealthy lymphatic fluid from the body has been absorbed through the soles. The colour of the sachets will turn light after continuous use. This is an indication that the toxins of the body have been reduced



As it is well known, the soles of the feet are reflexive zones of our human organs. The soles of the feet are where acupuncture points centralized, also recognized as the 2nd heart of the human body. Very often the toxins accumulate and circulate here. Coincidentally, **Kino Kiseki** can absorb these toxins, resulting in you feeling fresh and light.

Kino Kiseki relaxes muscle, enhance metabolism, activates body cells, upgrades immunity system, improves sleeping quality and makes you feel very energetic.

KINO KISEKI REDUCES SWELLING AND RELIEVES BODY PAINS

Kino Kiseki has great effects to those who have health problems like Rheumatism, Gout and Arthritis, and relief Joint Pains, Knee Pain, Swollen Veins and Swollen Legs, Waist Pain and any other pain. It is regarded as a natural pain reliever.





USAGE OF KINO KISEKI TOXIN ABSORBENT

Place the correct side of the sachet with words onto the adhesive white plasters. Make sure the sachet is in the center of the plaster. Wash your feet before you apply the sheet. Stick and spread firmly onto the soles of the feet, stick it on before going to bed for better result. It can also be used for other painful areas of the body.

NOTE;

- ✓ STRICTLY FOR EXTERNAL USE, NOT TO BE TAKEN
- ✓ DO NOT STICK ON WOUNDS OR CUTS
- ✓ DO NOT USE IF THE SACHET IS DAMAGED
- ✓ KEEP OUT OF REACH FROM CHILDREN
- ✓ USE IT ONCE OPENED



KINO KISEKI

Natural Toxin Absorbent

Kino Kiseki is strongly recommended by doctors of Japan for swelling of the feet that is caused by extreme tiredness of the legs, heart problems, kidney problems and unhealthy blood circulation.





KINO KISEKI

The Miracle of Wood Treasure

Since the dawn of civilization, mankind is attracted and uses the power and energy of trees one way or another. Trees are the main sources of oxygen for humans. Furthermore, trees and plants also act as antidotes for many diseases. Hidden behind the growth of trees is the secrets and nature's intelligence that seem to be governed by some mystical power.

Dr. Kawase Toshiko also got attracted to the mystery power and energy of trees 26 years ago. She wondered how the trees suck up the nutrients, minerals and water from the soil and travel up to the trunk and from there to the branches and leaves.

She wondered if trees could grow for ages without any aid, humans too should be able to live longer if she could discover and harness the miracle behind the growth of trees. She wished, how good it would be, if she could turn this natural power and energy for human health-care, if possible. She decided to make a study and research on trees since then. She went to Mount Fuji everyday without fail, using her stethoscope to listen almost every type of tree.





KINO KISEKI

The Miracle of Wood Treasure

She gathered all related data and noticed that some big trees absorb about 3 to 4 tons of water daily. Finally, she discovered only broad-leaf trees such as “Kashi”, “Sakura” and “Buna” were most suitable to make a research and develop with.

She spent almost 26 years in Research and Development. After thousands of failures, at last, in the year 2000 she made a headline in Japan of her discovery- Wood Extract Sheet (Kino Kiseki).

The major ingredients of Kino Kiseki are mainly Wood Vinegar, Tourmaline, Pearl Powder, Chitosan and Pure Silica and Dextrin. All these ingredients are processed into powder form and packed into sachet. By attaching the powder sachet onto the soles with adhesive sheet, it functions like the mechanism of the trees, taking the natural power and energy to the human body.



MEDICAL FIELD AMAZED BY THE EFFECTIVENESS OF KINO KISEKI

“**KINO KISEKI**” gained immediate recognition when it was launched in the market. Medical practitioners have given it an overwhelming response, and many have since used it and acknowledged its effectiveness.

REMOVES TOXINS FROM HUMAN BODY

It is proven by the medical field that after the use of Kino Kiseki for about 30 days, lesser toxins will be left for the excretion. By sticking “**KINO KISEKI**” before going to bed, the following day you will discover the mysteries as below:

The colour of white powder sachet had changed into black or brownish, depends upon what kind of food you eat. The sachet contains a lot of unpleasant water and emits an offensive odor. This means, the unwanted or unhealthy lymphatic fluid from the body has been absorbed from the soles.

By using it continuously for about 30 days, the sachet will show significant change of coloration into lighter tones and the unpleasant odor will be reduced or totally eliminated. This indicates that the toxins in the body have been reduced. Thereafter, it is advisable to use once or twice weekly to maintain an active and healthy condition of the body as it is proven; human body accumulates 3 to 4 kg. of toxins per year from the type of food we eat these days.





THE NEW FAVORITE HEALTH CARE PRODUCT IN JAPAN

THAT RELIEVES PAIN & ELIMINATE TOXINS FROM HUMAN BODY

Both eastern and western medical practitioners recognized that soles are second hearts of human body and soles of the feet are reflexive zones of our human organs. Kino Kiseki activates more than 60 “acupoints” on the sole and absorbs the toxins from the entire body.

“Kino Kiseki” is strongly recommended by doctors of Japan for Swelling of the Feet that is caused by extreme tiredness of the Legs, Heart Problems, Kidney Problems and Unhealthy Blood Circulation.

“Kino Kiseki” will be very helpful to those who are suffering from Rheumatism, Gout, Arthritis, Knee Pain, Joint Pain, Waist Pain and Swollen Veins. If applied as a pain relief, one can feel the pain is reduced after 5 to 6 hours of application. It is regarded as a natural pain reliever.

“Kino Kiseki” relaxes Muscle, Enhance Metabolism, Activates Body Cells, upgrades Immunity System, improves Sleeping Quality and makes you feel very fresh, light and energetic.

For better result, it is advisable to stick it on both soles and the painful area before going to bed.





THE MAJOR INGREDIENTS OF KINO KISEKI

CHITOSAN:

It is obtained from the shell of a type of crab found in Hokkaido. It contains water-soluble molecules and of very high grade. It is known for its characteristic of keeping warm and rejuvenating.

WOOD VINEGAR:

Made from resinous substance of Sakura tree, Beach tree and Oak tree. Perfect for healing wounds and nourishing organs.

TOURMALINE:

It is natural mineral stone found in Brazil and contains ions and infrared radiation. It is known to enhance blood circulation.

PEARL POWDER:

It is form of volcanic glass. It has anti-gravity flowing power and absorption power.

PURE SILICA:

It is high quality siliceous sponge. Also has radical free circulation function.

STARCH

It is water-soluble carbohydrate that can absorb water to enhance the function of other ingredients. And a secret formula with other ingredients like Glycol.



FAQ

Q: Can Pregnant women use?

A: Yes of course, but only up to 8 months. But must stop using for the last two months and the baby born will be very healthy.

Q: How it can help ladies for irregular periods or pains during monthly period?

A: Of course it relieves pain.

Q: During confinement, can it be used or not?

A: It is not a medicine, but can be used no problem. The body is very tired after delivery and there is lot of loss of blood, it helps to purify and clean the blood very well.

Q: At what room temperature one can store?

A: Best is 20 degree Celsius .

Q: What is the expiry date?

A: 2 years from the date of manufacturing.

Q: How long can one stick it on the foot?

A: The best time is while sleeping and remove after 8 hrs., it is enough.



Q: Can it help to loose weight?

A: We must control our diet.

Q: Can it help breathlessness?

A: It is not a medicine. People suffering from Asthma, Breathlessness must use for long period. Flu and Cold is Ok.

Q: Can it help blood circulation?

A: Stiff shoulders Ok.

Q: Can it help for Gout, Migraine and Shoulder Aches?

A: Yes, it helps.

Q: Temperature measure can help or not?

A: It is not a medicine. It increase the efficiency of the internal organs.

Q: How long one can use it?

A: It has no side effects, only people with skin allergy can exp. Reddishness or pimple.

Q: How about Eczema?

A: No.



Q: Any other beside it is anti-oxidant?

A: In one year we consume 4kg. Of toxins by eating fast foods like can food and all type of fast food.

Q: Why the sticker has a bloodstain after removing?

A: People eat different type of food-the colour changes according to the food we eat.

Q: How many pieces we can use?

A: One on each foot is enough.

Q: Can it help cancer patient?

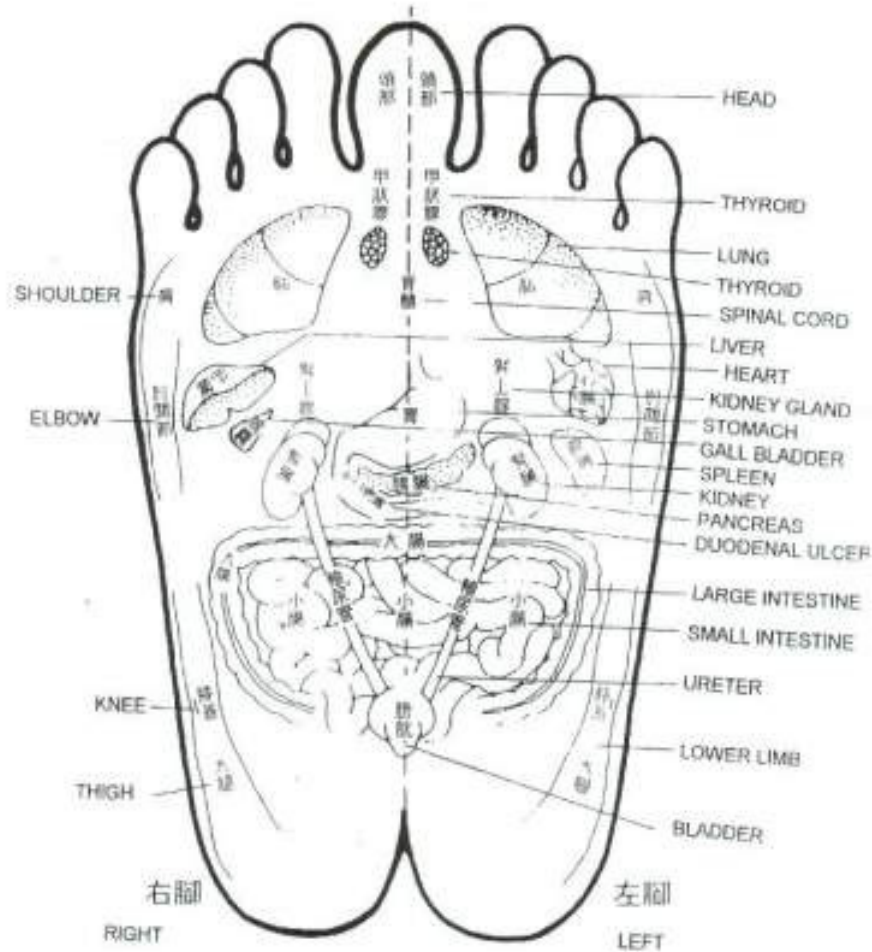
A: It depends on the DNA. There are four stages of cancer, if it is at mature stage. It is too late already, but can help if used in early stages.

Q: How about muscle pain?

A: Sock your feet in 40-degree temperature for few minutes then stick it on.

Q: How about Diabetes?

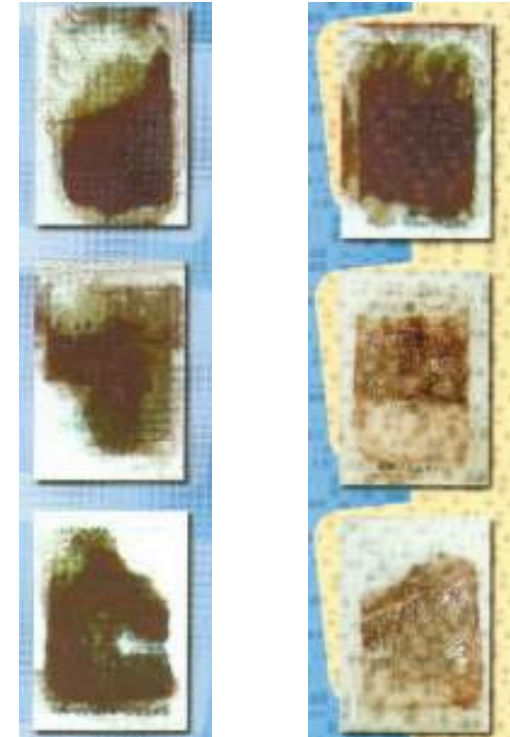
A: It sure helps. It improved a lot, after using one can see the ants are attracted to the used sachet that shows the sugar is extracted.





KINO KISEKI WILL CHANGE COLOUR IN JUST ONE NIGHT AS PROOF OF EXTRACTION OF TOXIN

One night is all that KINO KISEKI needs to prove that toxin is extracted from the body. The photographs show the use of KINO KISEKI by 6 users where the toxin absorbent turns black, grey and brown. In two cases KINO KISEKI has traces of red spots on it. This proves that an amount of the body's toxin has been excreted. Continue to use KINO KISEKI until it become less dampened and fades into a lighter color. The changes indicate that KINO KISEKI has performed its full function.



Before use the color is white

After Use, Kino Kiseki turns black, grey and brown. In two cases it has traces of red spots.





USAGE OF KINO KISEKI

Place the correct side of the sachet with words onto the adhesive white plaster.
Make sure the sachet is in the center of the plaster.

Wash your feet before you apply the sheet.

Stick and spread firmly onto the soles of the feet and painful area of the body.

NOTE

**STRICTLY FOR EXTERNAL USE, NOT TO BE TAKEN
DO NOT STICK ON WOUNDS OR CUTS
DO NOT USE IF THE SACHET IS DAMAGED
KEEP OUT OF REACH FROM CHILDREN
USE IT ONCE OPENED**

THE CORRECT WAY OF APPLYING KINO KISEKI



BEFORE AND AFTER USE

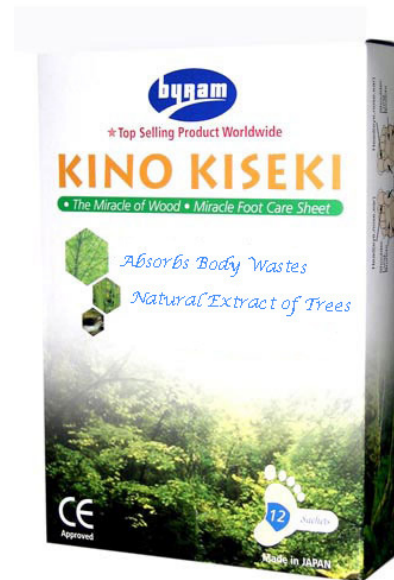
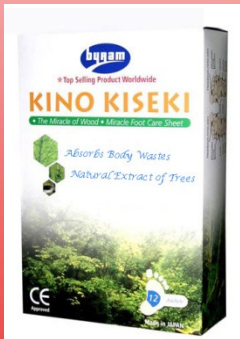




INGREDIENTS

Tourmaline
Chitosan
Wood Vinegar
Pearl Powder
Pure Silica
Glycol
Starch

**BYRAM, Sharing the Health Benefits of
Miraculous Energy from the Forest Trees**

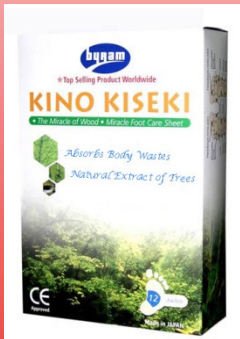


BYRAM
P.R.O.D.U.C.T.S



BYRAM HOLDINGS PTE LTD

Lifestyle



Thank You

BYRAM HOLDINGS PTE LTD
6 Battery Road, #30-00
Raffles Place S(049909)
Tel : (65) 6341-7912 Fax (65) 6341-5002
E-mail : info@byramgroup.com
Website : www.byramgroup.com

www.byramgroup.com

The Healthier You Are, The Happier You Are